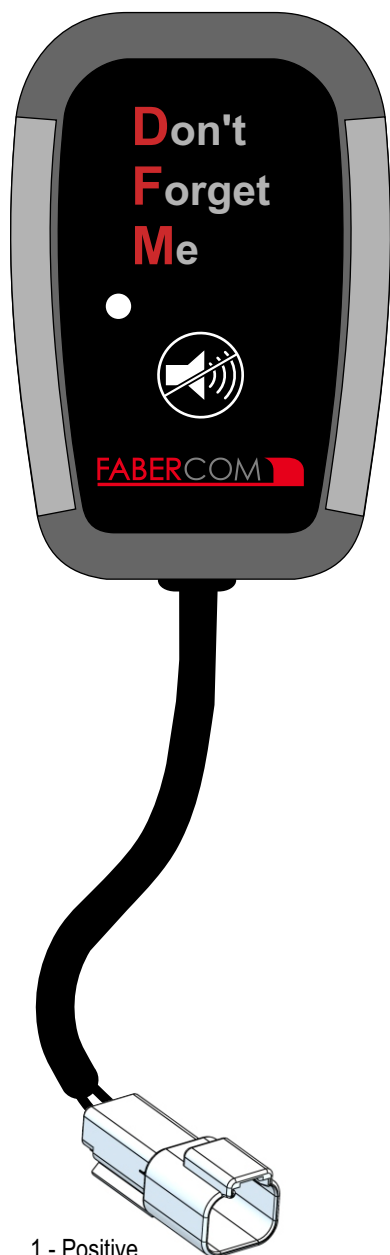


Don't Forget Me



- 1 - Positive
2 - Negative

Description

DFM (Don't Forget Me) is a device designed to avoid losing of the transmitter with an acoustic and visible notification that alerts the operator whenever Scanreco radio transmitter is not in the truck cabin.

There are two parts in this system: the first one must be fixed into the transmitter, the other one (picture to the side) must be placed in cabin.

Through a special magnet placed within these parts, an attraction force allows the device to remain attached to the outside of transmitter and detect its presence.

You can install DFM device on both Maxi and Mini radio transmitter. Installation is really simple and will be illustrated in a separate document.

Working mode

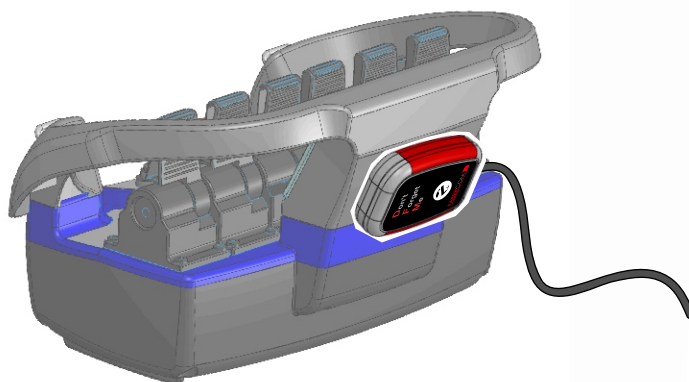
When the truck is powered on, the DFM verifies presence of the transmitter:

- if it detects the transmitter, a green led lights up without acoustic alarm;
- if it doesn't detect the transmitter, a red led blinks with acoustic alarm.

The buzzer can be silenced by a proper button: yellow led will indicate this status.

Keep the button pressed for 3 seconds to enable it again (buzzer not silenced).

Do not silence the buzzer when you take the transmitter from the cabin to start working.



Technical specifications

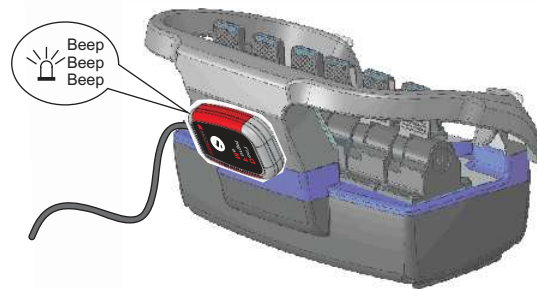
Power Supply Voltage	10 ÷ 30 Vdc
Current absorption	max 30mA
Working Temperature Range	-40 ÷ +70 °C
Connections	Cable L=200 cm with Deutsch DT04-2 connector
Environmental Protection Degree	IP54
Dimensions	50 x 75 x 17 (mm)

Don't Forget Me

There are 2 different versions of DFM:

- Single configuration (as described in our standard technical sheet)

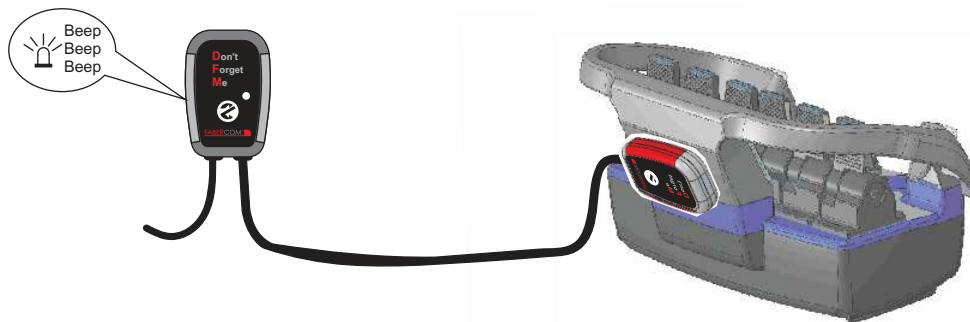
The same device detects transmitter's presence and alerts the operator whenever the transmitter is not in the truck cabin



- Double configuration

A fixed device must be installed in the cockpit and it alerts the operator whenever transmitter is not in the truck cabin.

A satellite device detects the transmitter's presence.



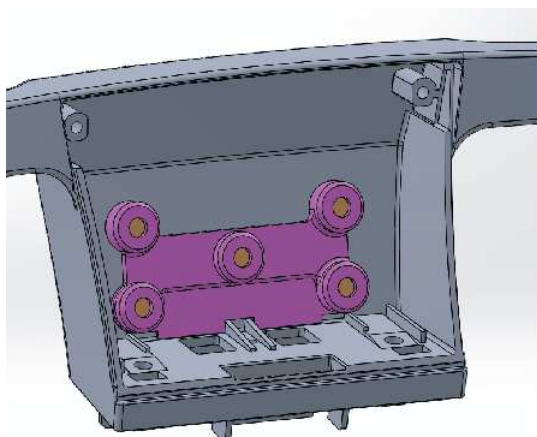
In both cases, you must install the magnet support (supplied with 5 magnets) inside the transmitter (Mini or Maxi):

Fixing mode:

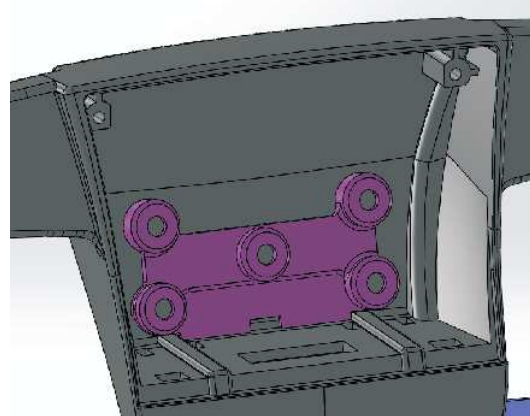
- 1) Turn off the operating machine and remove the battery from the transmitter;
- 2) Unscrew the two screws that fix LCD panel, LED panel or black panel;
- 3) Pull out the panel display without removing the strip;
- 4) Clean the display compartment;
- 5) Remove the protective film on the biadhesive strip and fix the magnet support inside the display compartment, keeping it pressed for a few seconds.

ATTENTION: the bottom of the magnet support has a shape that must exactly overlap with the display compartment.

- 6) Fix the panel display with the two screws.



MINI Transmitter



MAXI Transmitter